

CELEBRATING HISTORIC MILESTONES



"...ACHIEVEMENTS MADE POSSIBLE BY THE FAITH, VISION, LABORS
AND CUMULATIVE WISDOM OF MANKIND SINCE CREATION."

PRESIDENT RICHARD NIXON HONORING THE APOLLO 11 LUNAR FLIGHT, JULY 20, 1969



"DINNER OF THE CENTURY" INVITATION



PLANNED AS A HOMECOMING CELEBRATION FOR THE APOLLO 11 ASTRONAUTS, PRESIDENT AND MRS. NIXON'S "DINNER OF THE CENTURY" (LOS ANGELES TIMES) WAS THE FIRST AND ONLY STATE DINNER TO TAKE PLACE OUTSIDE OF WASHINGTON, DC AND THE WHITE HOUSE.

IT WAS HELD ON AUGUST 13, 1969 AT THE [FAIRMONT] CENTURY PLAZA HOTEL IN LOS ANGELES, CALIFORNIA, AND WAS ATTENDED BY 1,440 GUESTS INCLUDING THEN-GOVERNOR OF CALIFORNIA RONALD REAGAN, MEMBERS OF CONGRESS AND THE CABINET, HOLLYWOOD STARS, ASTRONAUTS AND THEIR FAMILIES, AND TITANS OF INDUSTRY.

DR. AND MRS. BECKMAN RECEIVED THEIR HAND-ADDRESSED INVITATION FROM THE WHITE HOUSE AND WERE AMONG THE CROWD OF GUESTS WHO TOGETHER FEASTED AND CELEBRATED ONE OF HISTORY'S GREATEST MOMENTS.

LOWER PHOTO CREDIT: FAIRMONT CENTURY PLAZA HOTEL





DINNER
In honor of the
Apollo 11 Astronauts

Supreme of Salmon Commodore
Wente Brothers
Pinot Chardonnay

Filet of Beef Perigourdine
Inglenook
Cabernet Sauvignon
Cask Artichauds Columbia
Carottes Des Indes

Limestone Lettuce
Fromages de Brie, Bel Paese,
Roquefort

Korbel
Natural

Clair de Lune

CENTURY PLAZA
Los Angeles, California
Wednesday, August 13, 1969

"DINNER OF THE CENTURY" MENU



TO HONOR THE APOLLO 11 ASTRONAUTS AND THEIR SUCCESSFUL MOON LANDING, THE WHITE HOUSE HOSTED A DINNER IN LOS ANGELES AT THE CENTURY PLAZA HOTEL ON AUGUST 13, 1969. GUESTS DINED ON SUPREME OF SALMON COMMODORE AND FILET OF BEEF PERIGOURDINE, SIPPED WINE AND CHAMPAGNE, AND ENJOYED CLAIRE DE LUNE FOR DESSERT.

DR. AND MRS. BECKMAN WERE JOINED BY THREE COUPLES AT THEIR TABLE: BETTY ANNE AND CHRISTOPHER KRAFT (NASA ENGINEER, TOP RIGHT), ERMALEE AND WALTER J. HICKEL (FORMER ALASKA GOVERNOR, LOWER RIGHT), AND FRANCES AND EDGAR BERGEN (FAMED VENTRILOQUIST, LOWER LEFT). DR. BECKMAN COLLECTED EACH OF THEIR SIGNATURES, AS WELL AS MABEL'S, ON THE BACK OF THE EVENING'S MENU CARD.

KRAFT, HICKEL AND BERGEN PHOTOS SOURCED ONLINE, RIGHTS FREE FOR EDIT, USE, AND SHARE.

Ermalee Hickel
Betty Anne Kraft
Chris Kraft
Mabel Dr. Beckman
Walter J. Hickel
Frances Bergen
Edgar Bergen



APOLLO 11 WHITE HOUSE MEMENTO

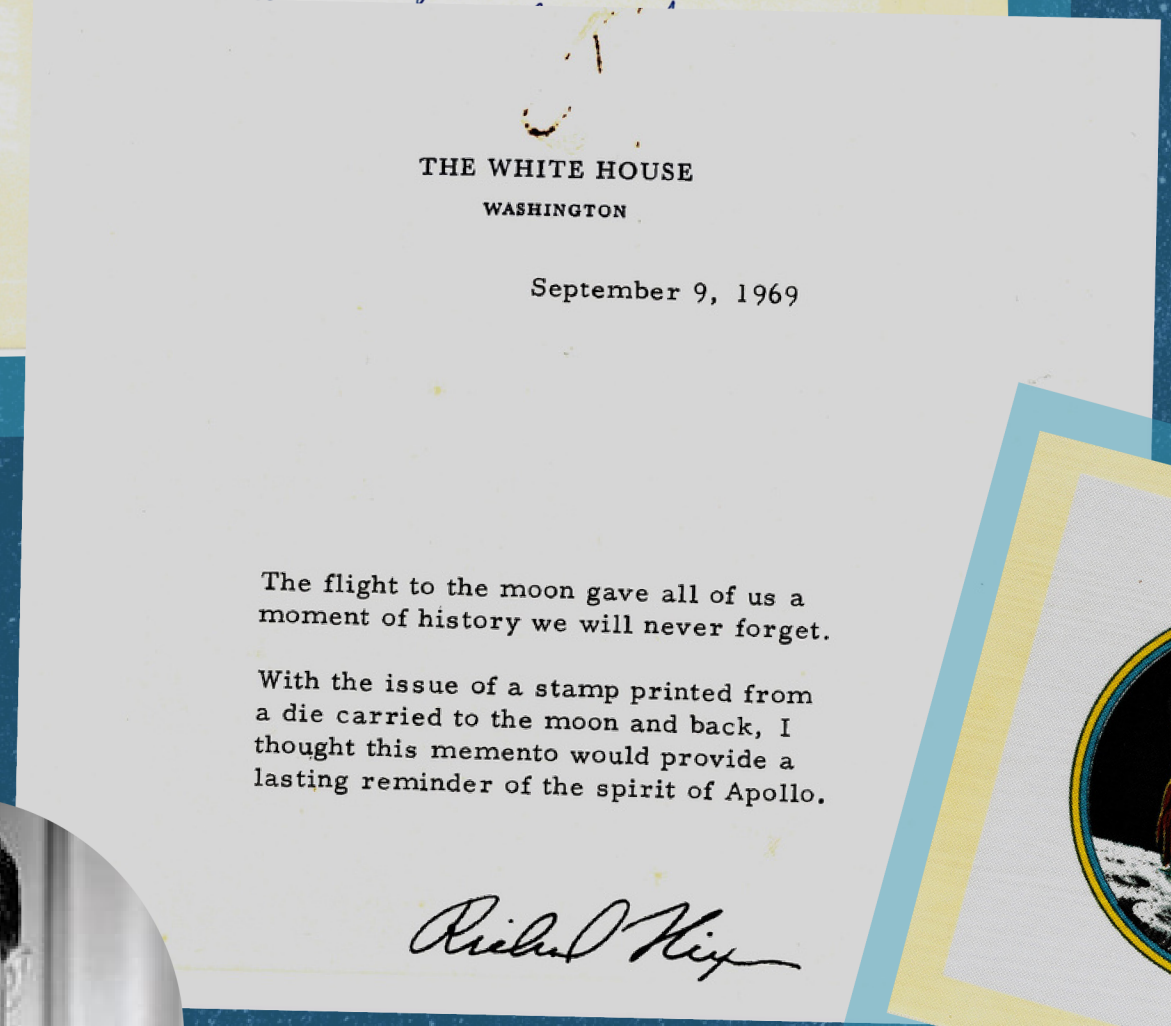
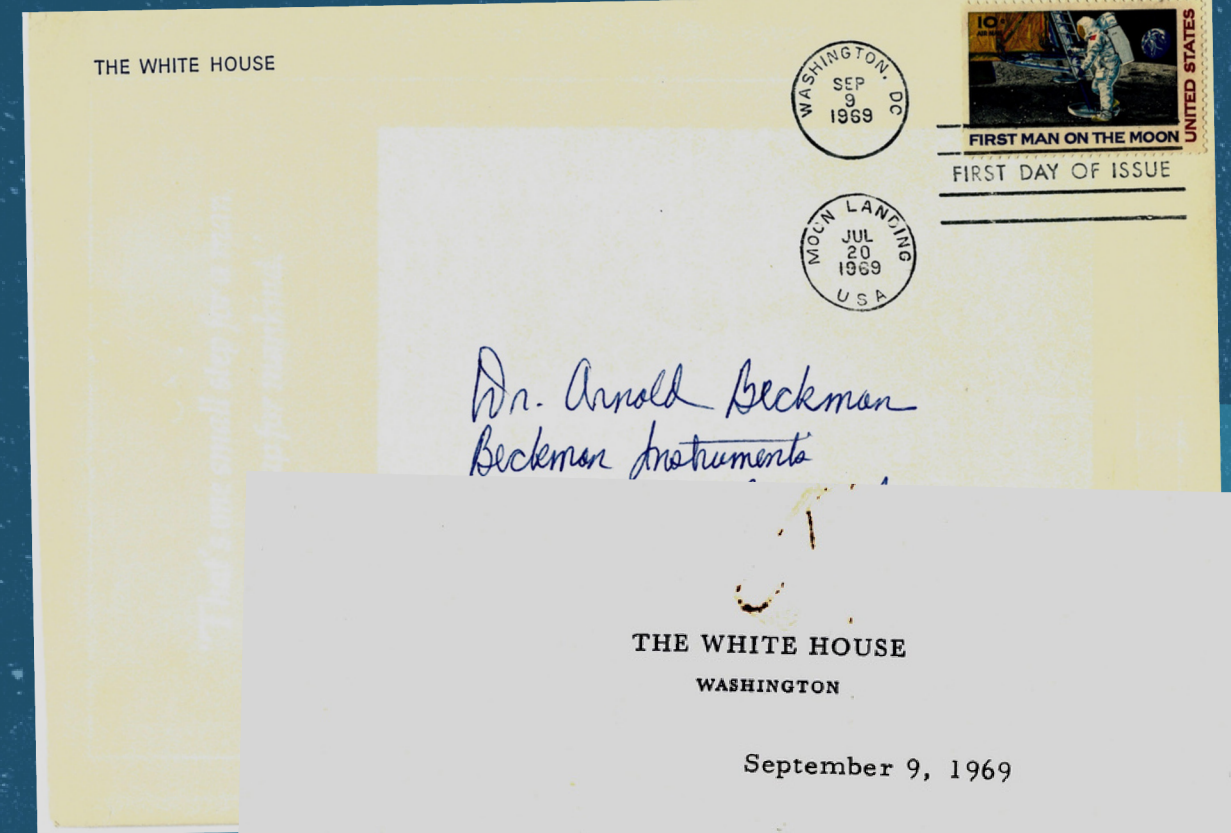


THE HISTORIC FLIGHT TO THE MOON WAS MARKED WITH A WHITE HOUSE MEMENTO MAILED WITH TWO DIFFERENT POSTAL INDICIA: WASHINGTON, DC, SEP 9, 1969 AND MOON LANDING, USA, JUL 20 1969. THE HAND-ADDRESSED ENVELOPE (TOP LEFT) FEATURED A 10-CENT AIR MAIL STAMP, "FIRST MAN ON THE MOON," SENT ON THE FIRST DAY OF ISSUE TO A LIST OF RECIPIENTS THAT INCLUDED DR. ARNOLD BECKMAN AND OTHER MISSION CONTRIBUTORS.

INSIDE WAS A SIGNED NOTE FROM PRESIDENT NIXON (MIDDLE LEFT), A SCREENPRINTED COPY OF THE APOLLO 11 INSIGNIA (AT LEFT, LOWER RIGHT), AND A FOLDED COMMEMORATIVE CARD (SHOWN NEXT). "THE FLIGHT TO THE MOON GAVE ALL OF US A MOMENT OF HISTORY WE WILL NEVER FORGET," READ THE NOTE. "...I THOUGHT THIS MEMENTO WOULD PROVIDE A LASTING REMINDER OF THE SPIRIT OF APOLLO."

THE APOLLO 11 INSIGNIA WAS DESIGNED BY NASA AS PART OF THE APOLLO MANNED SPACECRAFT SERIES OF MISSION PATCHES (LATTIMER, NASA). IT SHOWS AN EAGLE REPRESENTING THE UNITED STATES ABOUT TO TOUCH DOWN ON THE MOON WITH AN OLIVE BRANCH OF PEACE IN ITS TALONS AND THE EARTH IN THE VASTNESS OF SPACE, WHERE THE ASTRONAUTS WOULD RETURN HOME.

NIXON PHOTO SOURCED ONLINE, RIGHTS FREE FOR EDIT, USE, AND SHARE.



*"That's one small step for a man,
one giant leap for mankind."*



APOLLO 11 WHITE HOUSE MEMENTO



THE FOLDED CARD WAS COMPRISED OF A COVER, INTERIOR LEFT AND RIGHT PANELS, AND A BACK COVER. SHOWN (LEFT) WERE ASTRONAUT NEIL ARMSTRONG'S FAMOUS FIRST WORDS ON THE MOON, "THAT'S ONE SMALL STEP FOR MAN, ONE GIANT LEAP FOR MANKIND." THE ACCOMPANYING PHOTO SHOWS THE AMERICAN FLAG PLANTED INTO THE SURFACE OF THE MOON, ALREADY FILLED WITH THE CREW'S FOOTSTEPS. ARMSTRONG FACED TOWARD THE FLAG.

ON THE INTERIOR LEFT PANEL (RIGHT), A TRANSCRIPT SHARED THE TELEPHONE CONVERSATION FROM THE WHITE HOUSE TO THE MOON, HELD VIA SATELLITE BETWEEN PRESIDENT RICHARD NIXON AND ASTRONAUTS NEIL ARMSTRONG AND BUZZ ALDRIN.



*Telephone conversation from the White House
to the moon via Satellite between President Nixon
and Astronauts Neil Armstrong and Buzz Aldrin.*

President Nixon: Neil and Buzz, I am talking to you by telephone from the Oval Room at the White House. And this certainly has to be the most historic telephone call ever made. I just can't tell you how proud we all are of what you . . . for every American, this has to be the proudest day of our lives. And for people all over the world, I am sure they, too, join with Americans, in recognizing what a feat this is. Because of what you have done, the heavens have become a part of man's world. And as you talk to us from the Sea of Tranquility, it inspires us to double our efforts to bring peace and tranquility to earth. For one priceless moment, in the whole history of man, all the people on this earth are truly one. One in their pride in what you have done. And one in our prayers, that you will return safely to earth.

Armstrong: Thank you, Mr. President. It's a great honor and privilege for us to be here representing not only the United States but men of peace of all nations. And with interest and a curiosity and a vision for the future. It's an honor for us to be able to participate here today.

President Nixon: And thank you very much and I look forward—all of us look forward to seeing you on the Hornet on Thursday.

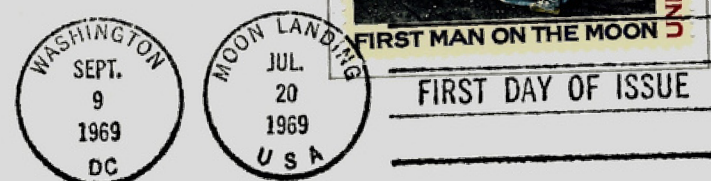
Armstrong: Thank you.

Aldrin: I look forward to that very much, sir.

July 20, 1969 A.D.



This stamp made from the die carried to and from the moon.



A philatelic memento honoring the Apollo 11 lunar flight and man's first visit to another celestial body, July 20, 1969; achievements made possible by the faith, vision, labors and cumulative wisdom of mankind since creation.

Richard Nixon
President of the United States

Edwin E. Aldrin Jr.
Michael Collins
ASTRONAUTS



Plaque placed on the moon by Apollo 11 Astronauts.

APOLLO 11 WHITE HOUSE MEMENTO



THE INTERIOR RIGHT PANEL (LEFT) INCLUDED A COPY OF A FIRST ISSUE STAMP USED TO MAIL THE MEMENTO AND THE TWO DIFFERENT INDICIA USED ON THE ENVELOPE FACE. THE STAMP WAS MADE FROM A DIE WHICH WAS CARRIED TO THE MOON AND BACK. SIGNATURES OF THE PRESIDENT AND THE MISSION'S THREE ASTRONAUTS ARE DISPLAYED ALONGSIDE A NOTE AND AN ILLUSTRATION OF THE PLAQUE THAT THE APOLLO 11 ASTRONAUTS PLACED ON THE MOON.

THE BACK COVER (RIGHT) INCLUDED A DESCRIPTION OF THE MOON GIVEN BY ASTRONAUTS NEIL ARMSTRONG AND BUZZ ALDRIN, WHEREIN THEY CHARACTERIZED THE SURFACE AS "FINE AND POWDERY" AND "WHITE, CHALKY GRAY...LIKE ASH...LIKE IT COULD BE COUNTRY BASALT."

Description of Moon by Astronauts Neil Armstrong and Buzz Aldrin

EXCERPTS

Armstrong: I'm at the foot of the ladder. The LM foot pads are only depressed in the surface about 1 or 2 inches. Although the surface appears to be very, very fine grained, as you get close to it. It's almost like a powder. Now and then, it's very fine.

Armstrong: I'm going to step off the LM now.

Armstrong: That's one small step for a man. One giant leap for mankind.

Armstrong: As the—The surface is fine and powdery. I can—I can pick it up loosely with my toe. It does adhere in fine layers like powdered charcoal to the sole and sides of my boots. I only go in a small fraction of an inch. Maybe an eighth of an inch, but I can see the footprints of my boots and the treads in the fine sandy particles.



Aldrin: That looks beautiful from here, Neil.

Armstrong: It has a stark beauty all its own. It's like much of the high desert of the United States. It's different but it's very pretty out here.



Aldrin: I'd say the color of the, the local surface is very comparable to what we observed from orbit at this sun angle . . . it's pretty much without color. It's gray and it's a very white, chalky gray, as you look into the zero phase line and it's considerably darker gray, more like ash ashen gray as you look up 90 degrees to the sun. The, some of the surface rocks in close here that have been fractured or disturbed by the rocket engine are coated with this light gray on the outside but when they've been broken they display a dark, very dark gray interior and it looks like it could be country basalt.



Apollo 11
25th Anniversary
COMMEMORATIVE BANQUET

July 20, 1994
AIAA and Apollo 11
Astronauts
Salute to
Southern California
Apollo Contractors

APOLLO 11 25TH ANNIVERSARY BANQUET PROGRAM



HELD ON JULY 20, 1994 AND HOSTED BY THE AMERICAN INSTITUTE OF AERONAUTICS AND ASTRONAUTICS, THIS COMMEMORATIVE BANQUET HONORED THE SCIENTIFIC AND TECHNOLOGICAL CONTRIBUTIONS OF THOUSANDS OF INDIVIDUALS WHO COLLECTIVELY MADE THE APOLLO 11 MISSION A SUCCESS.

AMONG THEM WAS DR. ARNOLD BECKMAN AND REPRESENTATIVES OF BECKMAN INSTRUMENTS, RECOGNIZED FOR THEIR WORK ON THE DATA ACQUISITION SYSTEM AND WATER CONDITIONING FOR THE COMMAND AND SERVICE MODULE AND LUNAR ADAPTER, AND THE SPECTROPHOTOMETER SYSTEMS AND COMPONENTS, E PUT/TIMER CONVERTER AND COUNTER, AND ANALOG RECORDERS THAT WERE PART OF THE LAUNCH SUPPORT.

THIS SPECIAL OCCASION WAS ATTENDED BY APOLLO 11 COMMANDER NEIL ARMSTRONG, APOLLO 11 COMMAND MODULE PILOT MICHAEL COLLINS, AND APOLLO 11 LUNAR MODULE PILOT EDWIN (BUZZ) ALDRIN, JR.



CONTINUING TO REACH TOWARD THE INFINITE



"...WHEN YOU'RE FACED WITH THE NECESSITY TO DO SOMETHING,
THAT'S A STIMULUS TO INVENTION."

DR. ARNOLD O. BECKMAN

